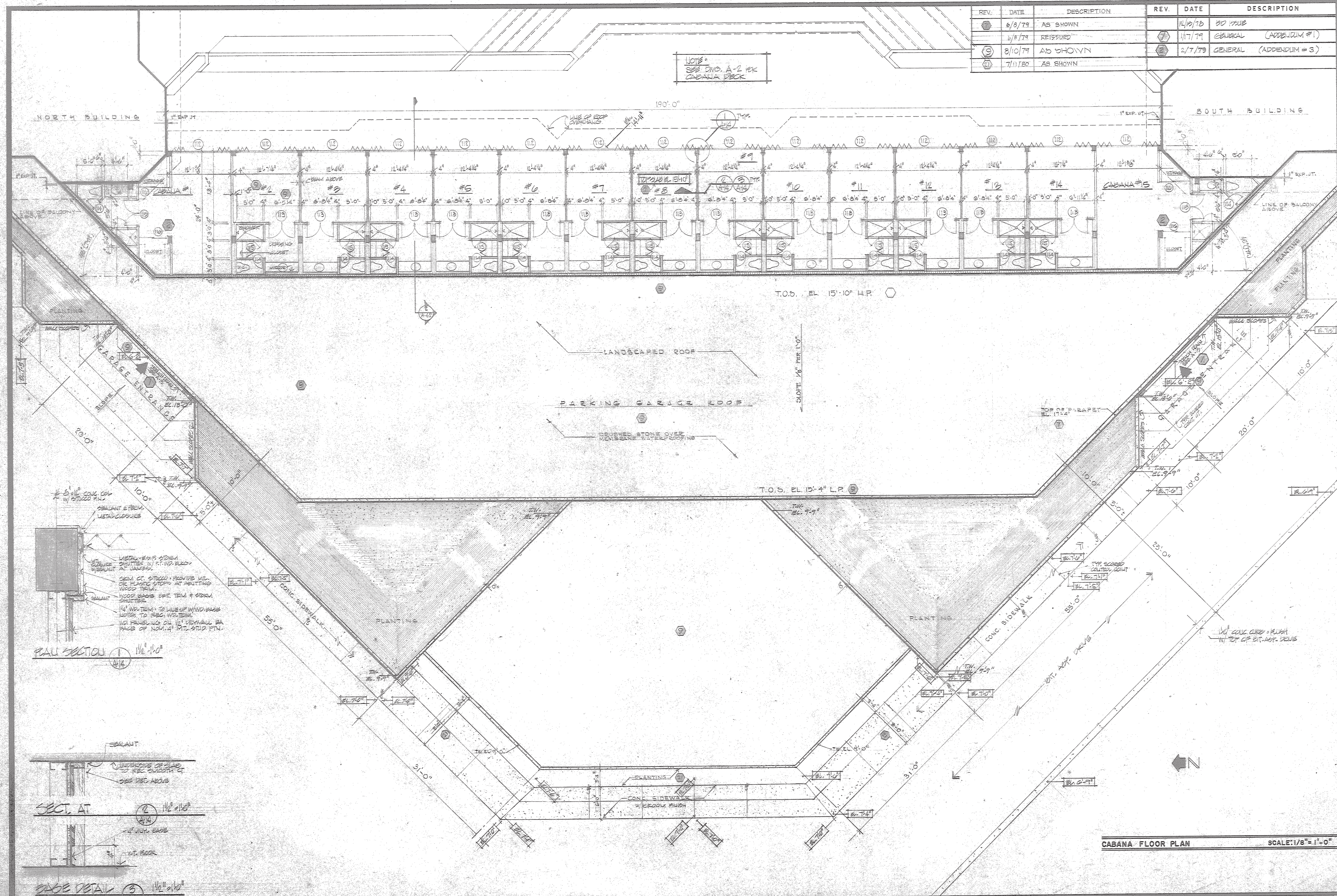


REV.	DATE	DESCRIPTION	REV.	DATE	DESCRIPTION
1	6/8/79	AS SHOWN	14	11/19/79	NO ISSUE
2	6/8/79	REISSUED	15	11/17/79	GENERAL (APPENDIX #1)
3	8/10/79	AS SHOWN	16	2/7/79	GENERAL (APPENDIX #3)
4	7/11/80	AS SHOWN			

NOTE:  
SEE DIV. A-2 FOR CABANA DECK



5" x 8" CONC. COL. W/ STUCCO FIN.  
SEALANT & PRIM. METAL CLOSURE  
METAL-SSFP STICKER SHUTTER W/ FT. WD. BLOCKS AT JAMBES  
SEMI CT. STUCCO - PROVIDE VIL. OR PLASTIC STOPS AT ABUTTING WOOD TRIM.  
WOOD GRABS EXT. TRIM & STICKER SHUTTER  
1/4" WD. TRIM - TO LINE UP W/ WD. BASE NOTCH TO REC. WD. TRIM.  
WD. FRAMING ON 1/2" VENEER BA. BACK OF NOM. 4" MET. STUD. FIN.

PLAN SECTION 1 1/2" x 10"

SEALANT  
UNIVERSAL OR SIM. TO REC. SMOOTH CT. SEE DET. ABOVE  
SECT. AT 2 1/2" x 10"  
2" WOOD EDGE  
1/4" WT. BOARD

BASE DETAIL 3 1/2" x 10"